



Little  
Eden

# ANNUAL REPORT

1 April 2009 - 31 March 2010



RESPECT • SANCTITY OF LIFE • LOVE & CARE



## **- Mission Statement -**

To care for, develop and enhance the quality of life,  
with love and understanding from a dedicated staff,  
people with intellectual disability of all races and creeds entrusted to us,  
by providing with trust in Divine Providence  
and in co-operation with the parents, the community and the State  
the necessary nursing, therapy and stimulation services  
in as an efficient and economic manner as possible.



# CONTENTS



|   |           |
|---|-----------|
| <b>Report from the Chairman</b>                 | <b>1</b>  |
| <b>Report from the Chief Executive Officer</b>  | <b>4</b>  |
| <b>Finance</b>                                  | <b>6</b>  |
| <b>Introduction to LITTLE EDEN</b>              | <b>8</b>  |
| <b>Edenvale Home</b>                            | <b>9</b>  |
| <b>Elvira Rota Village</b>                      | <b>10</b> |
| <b>Care &amp; Stimulation Programme</b>         | <b>10</b> |
| <b>Case Studies</b>                             | <b>13</b> |
| <b>Environment</b>                              | <b>15</b> |
| <b>Projects</b>                                 | <b>16</b> |
| <b>Fundraising, Marketing and Communication</b> | <b>17</b> |
| <b>Governance &amp; Staffing</b>                | <b>21</b> |
| <b>The Future of LITTLE EDEN</b>                | <b>24</b> |

# Report from the Chairman

It gives me great pleasure to present the Society's annual Chairman's report for the year ending 31st March 2010. Before reporting back on the Society's achievements, I would like to remind you of the primary objective of LITTLE EDEN which is, to nurture, expand and enhance the quality of life with love and understanding and provide a peaceful, loving permanent home to individuals with intellectual disabilities.

Bearing in mind, the depressed economic global markets which were also having certain effects here in South Africa in certain environments, the previous year was closed off with slight intrepidation for the forthcoming year not knowing what impact the economic slowdown would have on NPO's and in particular on LITTLE EDEN. I am glad to report that with a positive mindset and resolute faith together with some Divine Intervention, LITTLE EDEN has closed off the year on a very successful, positive footing.

This has most certainly been an eventful and busy year - in particular the date 31 January 2010, which I believe will be etched into the memories of many individuals who are both directly and indirectly involved with LITTLE EDEN. On this day a long term dream and aspiration of our foundress - Domitilla Hyams, became a wonderful reality: the dedication of the newly built Chapel, named the *Holy Family Chapel*, at the Elvira Rota Village. This proved to be a most spectacular event not only for all friends, guests and visitors - some of whom had travelled from overseas and other parts of South Africa - but most importantly for all our very special residents. It was awe-inspiring to witness such happiness and joy in so many faces. It is a phenomenal achievement that this project reached fruition after so many years of dreams and twelve months after the first sod was turned. I wish to emphasise that this realisation was purely due to the incredible support received by so many wonderful donors and benefactors. Special acknowledgment must be made of the professional team involved who worked pro-bono on this project, the Crabbia family for their very generous financial support in ensuring the completion of this Chapel and everyone who contributed by giving their

valuable time, material and financial assistance. Special acknowledgement goes out as well to Emperors Palace Casino Hotels for the fantastic luncheon which was laid on after the dedication formalities.

I also wish to convey my praise and commendations to the LITTLE EDEN project team who gave up so many hours, over and above their normal duties, in keeping their thumbs on the pulse and ensuring the timely completion of this huge project. Understandably there were some apprehensive and anxious moments but all in all with their consistent perseverance and determination, the project was concluded well. An additional word of thanks must also go out to all the staff and volunteers who made this day the success it turned out to be - to everyone involved - very well done!

The *Holy Family Chapel* is a place where the residents, staff and parents find comfort and peace in God's presence. Archbishop Emeritus George Daniel, who officiated at the Dedication of the Chapel, now celebrates Holy Mass every Wednesday in the new Chapel for the residents and staff. Many thanks, Your Grace, for your kind devotion and loyalty towards LITTLE EDEN and its residents.

Adjoining the Chapel building, a well laid out Garden of Remembrance has been constructed, together with the Chaplain's residence within the Chapel perimeter.

One of Domitilla's other dreams for LITTLE EDEN was also fulfilled in January with the arrival from India of three Religious Sisters. They have taken vows to offer their services to perform the work of God and have accepted the challenge of working at LITTLE EDEN. We welcome them and wish them all success and a long stay with LITTLE EDEN.

The two facilities have constantly been undergoing further changes, improvements and refurbishments. Of note, the Village has seen further dramatic changes which all lead to the added enhancement for the residents. The 'values' gardens which are replications of the three symbols which symbolise the objectives of LITTLE EDEN and guide everyone in their work -

# Report from the Chairman (Cont.)

namely *Respect, Sanctity of Life and Love and Care*, were completed together with a sparkling fountain outside Pino's Place.

There have been many other highlights during the year, whilst for the residents, the ever favourite annual Christmas concerts are always a highlight. Again this year's concert proved to be a great success and excitement for all the residents. It is, as always, a truly inspirational event to witness. It is with extreme pride that we can witness these residents giving of their best in their own way during these concerts and it is completely rewarding to experience the joy, happiness and pure elation of the residents in their response to the applause and ovations from the audience. A very special word of appreciation must go out to all the individuals involved in making this the success it is - your dedication, enthusiasm together with perseverance is truly accredited and recognised.

The annual fête was well organised as usual, notwithstanding the fact that up until the day before the event the weather did not play a positive role. This resulted in some very tricky and unsteady footwork in avoiding some of the mud which had developed due to the tremendous amount of rain - a mud-wrestling event could have been a most appropriate event for the day. The day was a great success and achievement, with great participation from the community as always. Congratulations and appreciation goes out to the organisers, helpers and sponsors who assisted in making this a memorable and successful day.

Apart from the normal day to day activities the residents from both Homes also had an opportunity to participate in a number of many other organised events such as sports days, spring day events, fire drills, outings to the Brenthurst gardens, the occasional special birthday parties etc. These events are always appreciated.

It is with exceptional pride and satisfaction, and here I believe I speak also for my fellow Board members, that we serve on the Board of Governors of LITTLE EDEN, and it is in its total transparency in

governance due to the regular interaction from the Board and the management team that have resulted in the accomplishments on all the aspects of living up to its stated Mission Statement, its Values and Key Objectives. Here I must commend and give full tribute to the leadership of the CEO, Mrs Lucy Slaviero, and a special accolade to the whole management team from every department for their tireless and unstinting efforts, including all the office personnel who daily keep the wheels in motion. There have been many success stories this year but by the same token there have also been certain trials and tribulations which have put some strains on the financial resources such as delays in receiving subsidies and medication for the residents from the Department of Health. Fortunately after some interruption these issues had been resolved resulting in LITTLE EDEN being on a good footing again. These successful achievements are entirely due to the vigorous endeavours and toils of everyone involved.

It is satisfying to see the inspiration seeded by the founders - Domitilla and Danny Hyams, who still partake selflessly in certain functions of the Society - still permeating with the true commitment and dedication to all levels of staff. A distinctive word must be put in for the fund-raising department - they always have a daunting and formidable task in ensuring the successful task of meeting the operational expenses by sourcing funds and appeals on an ongoing basis, a task which is becoming more intimidating in these economically depressed times. A special word of thanks must also go out to all the caregivers, house-mothers, nurses, therapists, Society Ambassadors and ever increasing number of volunteers and unsung individuals who have shown such incredible patience, dedication and devotion to the residents of the Society.

The two LITTLE EDEN Shops, at Primrose and Edenvale, have undergone a very positive refurbishment and change in layout and are both still proving to be a vital source of necessary income to the Society. The positive feedback that is occasionally received from the patrons is most encouraging and I would like to thank all the personnel involved in these two shops and as well as all the wonderful

# Report from the Chairman (Cont.)

donors who are ensuring the ongoing success of these two outlets.

The financial affairs of the Society will be discussed in more detail by our Treasurer, Mr Doug Boake, but here I would like to acknowledge the very positive continued commitment shown to the Society by Mr Peter Mannix and his team. The prudent financial controls which are continually being improved and updated together with the regular financial and management meetings have resulted in the corrective processes and proper decisions been taken.

3

I strongly believe that with the continued support and devotion from all, LITTLE EDEN will grow from strength to strength and thrive for many years to come and I pray that God will continue to guide and bless us and enable us to continue the work of caring for all these little angels in our custody.

Finally I wish to thank my colleagues on the Board of Governors for their most invaluable input. I look forward to their continued support and involvement in the future, as we now plan to create a foundation as a means of ringfencing LITTLE EDEN's assets to ensure their protection.



**MAURIZIO GALIMBERTI**  
Chairman



*Garden of Remembrance*



*Michael Welsh House*

# Report from the Chief Executive Officer

It is a privilege to be part of an organisation such as LITTLE EDEN, which, after 43 years of service to persons with intellectual disability, continues to nurture and care for our precious residents on a daily basis.

In 1967, the doors of LITTLE EDEN opened for the first time after Domitilla Rota Hyams realised her childhood desire to help others as a missionary in Africa. She became a busy housewife with the dual responsibilities of raising her six children and gathering friends to assist her in caring for the disabled. Throughout the years, Domitilla's unwavering faith and trust in God and His Divine Providence, has enabled her to see the bigger picture and carry on with her mission - even through the toughest and most uncertain times.

We believe that even today Divine Providence is a reality at LITTLE EDEN - without it, we would not be here. It is visible in the kindness and philanthropy of every single donor - big and small - who has ever believed in our worthy cause, as well as those who will come to do so in the future. Without their continued support, our efforts are futile.

Domitilla, who celebrated her 92nd birthday in May, has not been actively involved in the operations of the Society for a few years now due to failing health. However, her mission has always been clear and throughout the years she has continuously strived to reach specific milestones she had envisioned for the Society.

The official blessing and opening of the *Holy Family Chapel* at Elvira Rota Village, Bapsfontein was certainly one such milestone. It can only be described as an unforgettable day in the history books of LITTLE EDEN.

The turning of the first sod was undertaken in pure faith in 2007, as there were no funds available to start building. However, once again, Divine Providence prevailed. So many individuals and companies - too many to list here - recognised the value of this project and believed and invested in it. I do, however, wish to acknowledge in particular our main donor: Alfredo and Manuella Crabbia who donated R5 million towards the

completion of the Chapel. The photo of the cornerstone (below) pays tribute to Mr and Mrs Crabbia for ensuring that the builders were paid and off site on time! The pro-bono work of the professional team added up to R1.2 million. Just as invaluable was the support we received from Corobrik, who have also committed to assist us with the long-term volunteer accommodation.



*Mr and Mrs Crabbia at the cornerstone of The Holy Family Chapel*

Another milestone was reached when three Sisters of the Imitation of Christ (SIC) - a Catholic order of Indian nuns - arrived in South Africa in January. They have agreed to serve the children as part of their missionary work. A contract was signed with them, in the hope that the Order will establish a permanent presence at LITTLE EDEN.



*Sr Therese, Sr Tessa, Sr Magie, Domitilla Hyams and Agnes Rohrbeck*

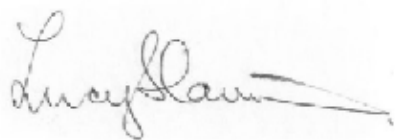
# Report from the Chief Executive Officer (Cont.)

Without dedicated staff LITTLE EDEN would not carry on. Their constant input is so important in the care of the children. Living the values of LITTLE EDEN, namely: *Respect, Love and Care, Sanctity of Life*, is at the centre of everything. The results are visible in the interaction between the children and staff, in the children's smiles and in their contentment.

The Society remains completely dependent on the subsidies from the Department of Health, the National Lottery Distribution Trust Fund and many other major and individual donors. This support allows LITTLE EDEN to keep growing, developing and expanding - all to the benefit of the 300 special people in our care. Thank you all for your support!

5

I am confident that with the ongoing loyal aid of the Board of Governors, management, staff, volunteers, donors and parents, LITTLE EDEN will go on to fulfill its mission which is to care for, develop and enhance the quality of life of persons with intellectual disability.



**LUCY SLAVIERO**  
Chief Executive Officer



*The launch of the LITTLE EDEN values*



*"Respect" Garden at Elvira Rota Village*



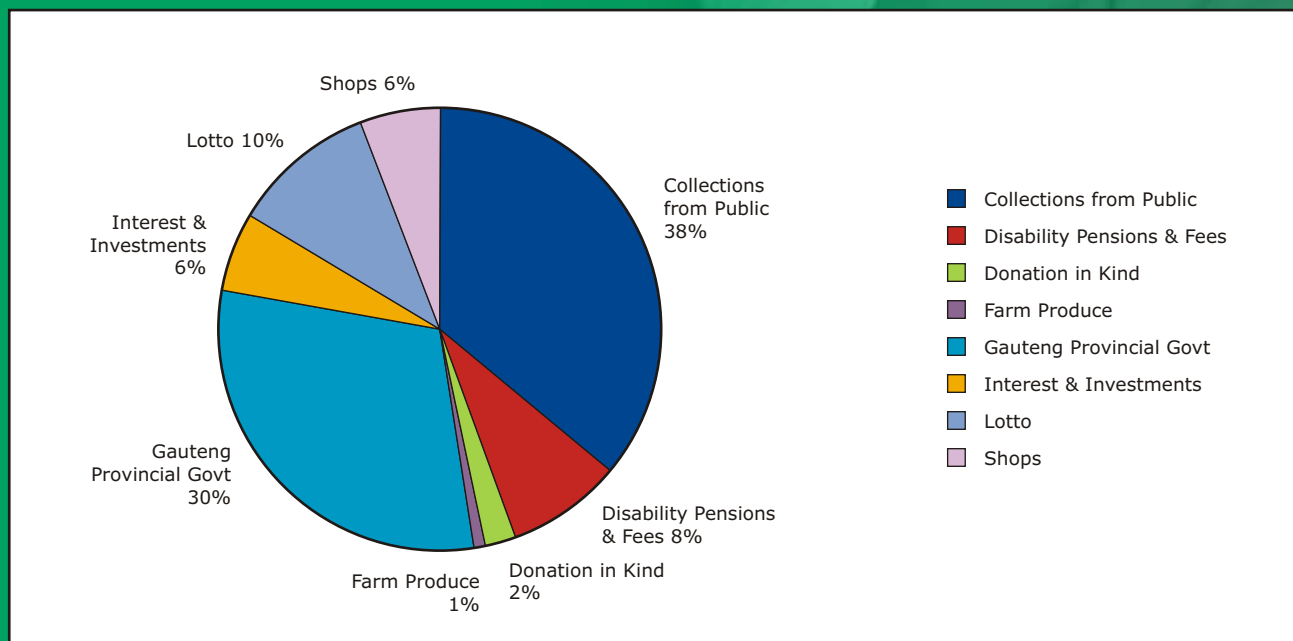
*Sr Therese with Keketso*

# Finance

LITTLE EDEN finds itself in a very favourable position at the end of this financial year. The annual surplus of R11 757 463 has contributed to increased funds on call and the funding of the development at Elvira Rota Village. Included in the *Collections from Public* is R5 914 845 for the Chapel Fund which is non-operational income. Had we not received these funds, this years' gross income would have been very much the same as last year. The specially funded *Holy Family Chapel* project is almost complete at 31 March 2010. The increase in expenses has been limited to 4%.

## Income

| Category                   | %           |
|----------------------------|-------------|
| Collections from Public    | 38%         |
| Disability Pensions & Fees | 8%          |
| Donation in Kind           | 2%          |
| Farm Produce               | 1%          |
| Gauteng Provincial Govt    | 30%         |
| Interest & Investments     | 6%          |
| Lotto                      | 10%         |
| Shops                      | 6%          |
| <b>Grand Total</b>         | <b>100%</b> |

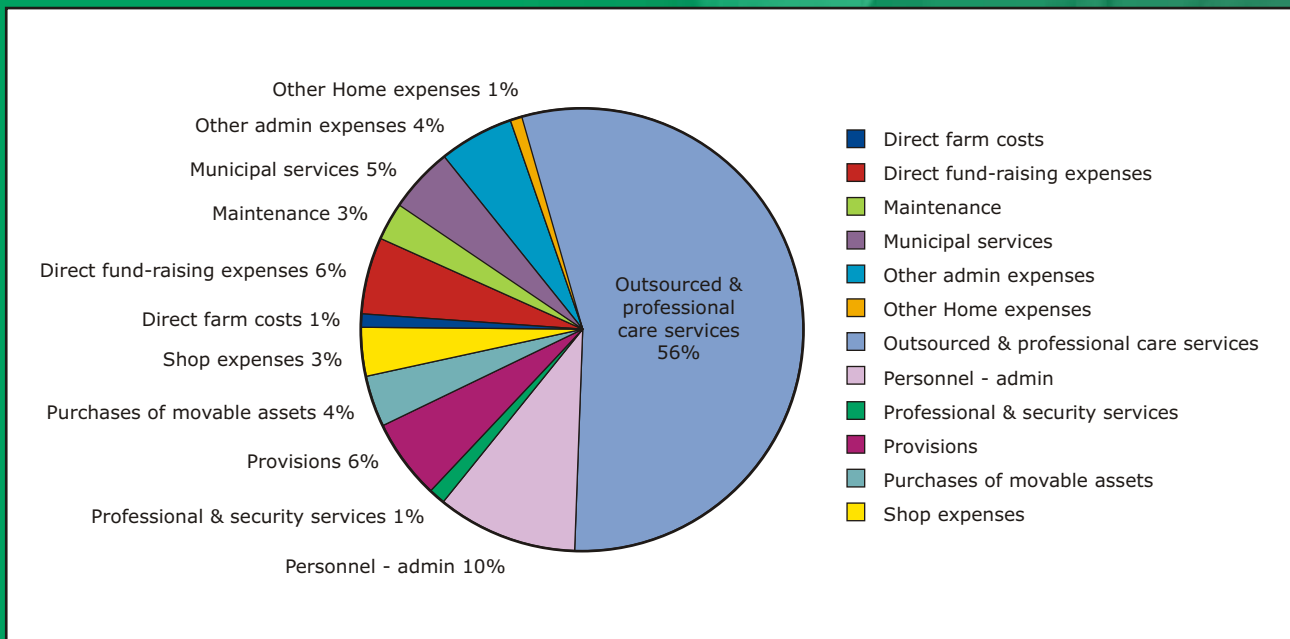


# Finance (Cont.)

## Expenses

| Category                                | %           |
|---|-------------|
| Direct farm costs                       | 1%          |
| Direct fund-raising expenses            | 6%          |
| Maintenance                             | 3%          |
| Municipal services                      | 5%          |
| Other admin expenses                    | 4%          |
| Other Home expenses                     | 1%          |
| Outsourced & professional care services | 56%         |
| Personnel - admin                       | 10%         |
| Professional & security services        | 1%          |
| Provisions                              | 6%          |
| Purchases of movable assets             | 4%          |
| Shop expenses                           | 3%          |
| <b>Grand Total</b>                      | <b>100%</b> |

7



# Introduction

*LITTLE EDEN Society, established in 1967, founded by Mrs Domitilla Rota Hyams, (who has received numerous awards in recognition of her pioneering work) is licensed with the Department of Health and is a registered Nonprofit Organisation (001-827 NPO). The Society is an approved Public Benefit Organisation in terms of Section 30 of the Income Tax Act, (PBO 930/0000/03) and has been granted Section 18A status. Therefore, donations to the Society are deductible in terms of Section 18A of the Income Tax Act, dependent upon the amount of the tax payer's tax liability.*

LITTLE EDEN is a permanent Home to 300 children and adults with profound intellectual disabilities.

Our residents range in age from 18 months to 60 years. Statistically, the average age of our residents is 23 years, but the level of mental functioning is that of a one-year old and younger. The majority of these special people are also physically disabled and require intensive, 24-hour nursing care.

The work of LITTLE EDEN is ongoing: 365 days of the year with no reprieve - as it has been for the past forty-three years. As always, the general health and well-being of our special people was the core work of our operations during the past year. The Society ensured that the residents were kept comfortable and provided them with care and stimulation programmes that encouraged them to develop to their full potential. LITTLE EDEN continuously seeks to highlight the value of the persons in its care. *Respect, Love and Care, Sanctity of Life* - these remain the core values of LITTLE EDEN.

The stark reality of our cause is that 229 of our 300 children were previously abandoned or come from indigent families who are unable to support them financially or otherwise.

Some are HIV positive or have AIDS. Caring for the terminally ill and dying is an essential part of the work of the Society. The majority of our residents stay with us until they die. Some have been with us for over 40 years and will remain in our loving care until they pass away.

Our labour of love remains the same. Over the past year the same routines, treatments, therapies, loving care and other tasks were repeated on a daily basis in order to ensure the children went to bed happy, warm, loved and fed. In many instances progress is not immediately apparent and it can take years to teach a child a simple skill, such as holding a cup.

Constant loving care is essential and is part of the reason for the success that some of our children have achieved during this year. Their case studies are documented later on in this report on page 13 and 14. Our children know they matter, that they belong somewhere. That knowledge gives them a reason to live and motivates them to keep trying to reach their full, individual potential.

The feedback and appreciation expressed by many of our donors, friends and visitors over the past year, is testimony to the outstanding work being carried out by the Society. It also encourages us to continue what we do every day, because our children *do* matter.

LITTLE EDEN is more than an institution where persons with disabilities are looked after. It is a warm, loving home with real people who are cared for within a family set-up. It is a place where each precious life is valued and respected.



*Our special people*

# Welcome to Our Homes

The Society has two beautiful Homes: one in Edenvale with 180 children and adults and the other on a farm in Bapsfontein (Elvira Rota Village) with another 120 residents.

For the most part it has been a good year. The majority of the children experienced good health. Some sad times were experienced when a few of our children passed away. It is never easy to deal with the death of a resident. Their absence is deeply felt by staff members, who become attached to the children, as well as by their friends. However, the work is ongoing and the empty beds are soon filled with new children who also require the specialised care and attention that is readily available at LITTLE EDEN.

9

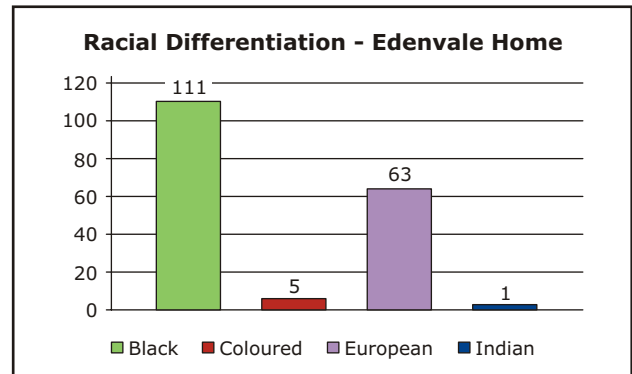
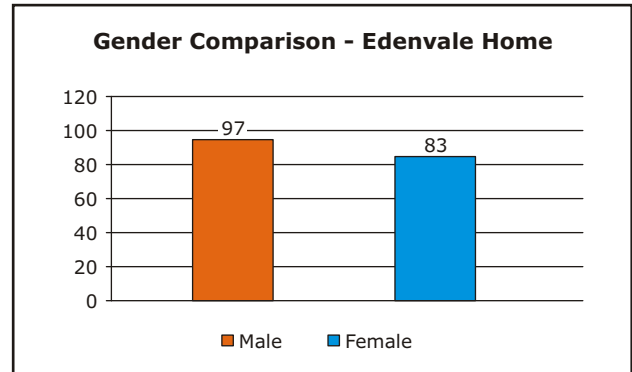
Part of the daily tasks at LITTLE EDEN includes the washing of 3 tons of laundry; 2 500 nappies hanging on the line; the preparation of 300 meals five times daily; bathing, feeding, changing, carrying, brushing teeth and administering medicines to 230 of the 300 residents. There is always a pair of hands to hold and comfort a crying child in the middle of the night. Emergency interventions are often required.

## Edenvale Home

The Edenvale Home caters for 180 residents at the level of frail care. The Home is equipped to provide a full Therapy and Care and Stimulation Programme which is ongoing. Here the children are grouped in their different sections, according to their general health and abilities.

Both Homes accommodate a group of boys and girls, men and women, with dual diagnosis, i.e mental illness with intellectual disability. They have different needs and are cared for in their special sections where they can participate in the care and stimulation programme, and yet still feel safe, secure and content.

The average physical age at the Edenvale Home is 20 years.



*Aerial photo of Edenvale Home & facilities*



*Some of our residents enjoying sports day*

# Welcome to Our Homes (Cont.)

## Elvira Rota Village

Here we care for 120 residents. The residents at Elvira Rota Village are more involved in the activities of daily living and several get a turn to help in the laundry, kitchen or on the farm. Once a week they receive "pay" for their participation in the form of a packet of crisps, a chocolate and cold drink. They are very proud of their responsibilities and take it seriously. It gives them a sense of belonging and self-worth.

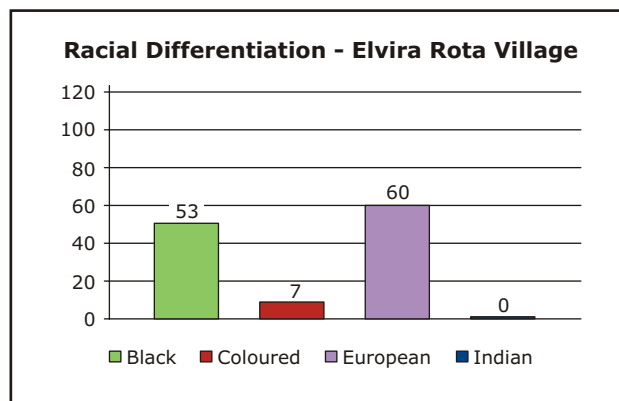
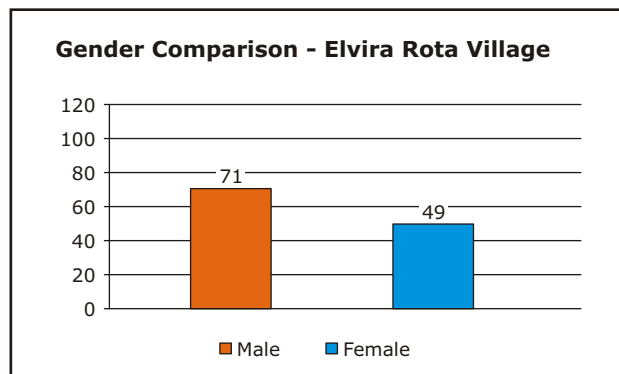
The average physical age of the residents at Elvira Rota Village is 27 years.

The programme is moulded to the children's various abilities. It includes laundry duty, kitchen duty, farm duty, contract work (such as filling soap containers) and processing farm produce for those who are physically able to, and want to assist.

Other activities include music-, occupational-, and water therapies, painting, puzzle building, art, assisted horse-riding, sports and gardening and general enjoyment of the environment through our wetlands, sensory garden, and labyrinth. Most of these work and leisure activities require voluntary physical movement.



Aerial photo of Elvira Rota Village Home & facilities



10

## Care and Stimulation Programme

Some people mistakenly assume that LITTLE EDEN is a *school*. It is not easy for persons who are not generally exposed to children and adults with profound intellectual disability, to comprehend the extent and limitations of our children's abilities.

Our special people do not have the ability to learn how to read or write, nor could they ever attend a "normal" school. However, each child is unique and has within him/her different abilities. It is our privilege to help each of our children to reach their full potential, regardless of how seemingly limited that may be.

LITTLE EDEN offers its residents a combination of therapies: physio-, occupational-, hydro-, art-, and music therapy. Animal therapy also forms part of the programme and is met with great excitement from our residents. *Paws for People* come to visit the children in Edenvale regularly and, at the Village,

# Care and Stimulation Programme

horse-riding is enjoyed by the residents with the assistance of the Group Leaders.

Children with the potential for progressive development are identified and provided with therapy specific to their needs in groups of four to six, on a rotational basis. The therapists are supported by care workers who receive ongoing training in how to stretch, position and handle the children. The care workers are encouraged to continue this beyond the scheduled sessions.

The programme includes drawing, painting and cutting and "dancing" with the children in their wheelchairs. With supervision, simple puzzles and activities of daily living such as dressing and undressing and brushing of teeth, are undertaken with those who are able to respond.

11

This all forms part of the therapy programme. Even those who are unable to hold a paint brush by themselves participate with the help of group leaders and care givers. We believe that every work of art produced can be used in some way, as it gives meaning to what our residents are *able* to do.

Music therapy involves the therapist working with the "musical child" - that part of the child that is not disabled. This allows our children to express themselves in the different ways that they are able to. The chimes, that were introduced to the wetlands area, have proved beneficial to the residents as the effect of sound in a natural environment is more conducive to restoration on all levels as the sound does not compete with "unnatural" sounds, such as fluorescent lighting and air conditioning. This has great value for our children, as it has been observed over and over again how the residents become relaxed and still, in this setting. The chimes provide a meditative and contemplative space where the focus is on sound only. For our residents who have intellectual disabilities, this offers a perfect space where they can tune into the sound without having to understand anything *per se*.



*Our children so enjoy the visits from Paws for People*



*Shaun receiving physiotherapy*

# Care and Stimulation Programme (Cont.)

Hydrotherapy, using the Jacuzzi baths at both Homes (of course always assisted by staff), helps to relax the children's spastic muscles - a great aid in keeping them comfortable and pain free. It has also proved to be very effective in calming those residents who have both mental illness and behavioural problems.

Care workers massage residents' hands and feet regularly to improve circulation and to interact with the children - the sense of touch is important.

Certain events and outings are planned for the enjoyment of our residents. These various special days and occasions include cookie baking days, pancake days, sports days, concerts, Easter Egg hunts and outings to Spur, Brenthurst Gardens and the zoo situated at the neighbouring farm in Bapsfontein.

Our children spent many months in preparation for the annual Christmas concerts. This involved commitment and input from staff and volunteers. Many of the activities in the Homes centred around this annual event. Decorations were made in-house as usual and the children had to learn the Christmas carols!

At LITTLE EDEN we believe that the spiritual development of the children is as important as their physical and emotional well-being. They love taking turns to attend First Friday Mass in Edenvale, and at Elvira Rota Village they look forward to their weekly Mass with Fr George Daniel, Archbishop Emeritus of the Archdiocese of Pretoria.



*Hydrotherapy is a favourite activity for our children*



*Feet are massaged - touch is important*



# Case Studies

13

**Pule** is a three-year old boy who was admitted to LITTLE EDEN in September 2009 together with two of his brothers who also have intellectual disability. On admission Pule could sit, crawl and roll, but was unable to walk. The physiotherapy assistant, Vanneau, immediately started Pule on a daily programme consisting of strengthening, walking and standing exercises. As there are no therapy sessions over weekends, a walking ring was provided for him to use over weekends. Two months later he was able to walk by holding on to specific objects. Earlier this year, Vanneau started using a technique called "mirror stimulation" on Pule, where he would first show Pule what to do and then Pule would mimic him. Little Pule was so determined to stand independently! It took quite some time, but eventually Pule could take a few steps on his own. Today he walks beautifully and so enjoys his new-found freedom!

Unfortunately, Pule has a condition called Equinovarus (feet deformation). If the problem is left untreated, it will prevent him from walking and create great discomfort. He is required to wear splints to correct the problem and is being treated accordingly.



**Bo**, was admitted to LITTLE EDEN in June 2009. When she arrived she could sit, crawl, roll and push her wheelchair. She was able to get up by holding on to things, but could not stand or walk independently. Being the bubbly and determined little girl that she is, her potential was noticed and she started intense physiotherapy sessions. She responded well and started to take two or three steps at a time. Now she is able to take between seven and fifteen steps at a time!

Bo suffers from Ataxic Cerebral Palsy. She does not have proper balance and coordination of movement. Due to this condition, she will take longer to walk confidently without falling each time. Specific movement, balance and strengthening exercises are carried out with her on a regular basis. Nothing gets this little champion down!



# Case Studies (Cont.)

**Tshepo** is a beautiful young boy who is 9 years old and one of the 3 siblings who joined the LITTLE EDEN family in September 2009. It is the first time in the history of LITTLE EDEN that we have cared for three siblings.

Tshepo is able to walk, has limited conversation and understands simple instructions. However, despite Tshepo's enthusiasm and determination to do things for himself, he has spastic, deformed hands, which restricts him.

Tshepo was provided with two different types of splints: one he wears when feeding himself and the other is worn throughout the day in order to correct the problem. Our hope is that he will, over time, be able to hold and play with his toys as well as experience less discomfort. This might, however, take a long time to achieve, as there was no early intervention in his life.



14



Working with special children requires enormous patience and a willingness to 'listen' for hidden messages that cannot be verbally expressed. Our music therapist, Karen de Kock, explains: "During a recent session, one of our most severely disabled residents seemed distracted by a drawing of a flower on my notice board, repeatedly turning his eyes towards it. It's difficult to understand his needs, as he is not always able to make sounds and can only lift his thumb up for 'yes' and down for 'no'. I established that he wanted me to take the picture down so that he could touch it. With much effort, he put his finger down on the orange part of the flower and kept it there. I asked him if it was his favourite colour and he made a

strong sound which I interpreted as 'yes'. I asked him to pick another favourite colour and this time his finger rested on turquoise. He has a very strong bond with his mother who phones regularly to check on his well-being and who, through much effort in terms of transport, fetches him for home visits during school holidays. I remembered that his mother's name is Flora and asked him if the colours and the flower reminded him of her, to which he made another excited sound which I took as 'yes'. I then asked him if he wanted to send his favourite colours to his mother through sound, and together we hummed Tula Tula. I experienced a spark from him and enjoyment which was very endearing."

# Environment

15

LITTLE EDEN is proud to report on the active role that the Society has taken in protecting environmental resources. As an accountable and responsible non-profit organisation, we wish to give back to the environment in every possible way, as opposed to carrying out our tasks without any consideration for the impact it has on the environment.

We have systems in place at both Homes to encourage the community to participate in the appreciation of, and respect for, the environment.

An analysis undertaken on the total paper collected by the LITTLE EDEN recycling initiative at the Edenvale Home since December 1995, showed that we are only 10 tons away from reaching the 1 000 ton mark! This equates to a saving of over 15 000 pine trees!

The Society does not use disposable nappies, which is harmful to the environment, but washes 2 500 nappies every day! All detergents used at LITTLE EDEN are environmentally friendly.

A glass recycling initiative is also ongoing at the Edenvale Home and LITTLE EDEN continues to make the general public more aware thereof and to encourage the community to recycle.



*Recycling*

**Some of the projects that have been initiated by LITTLE EDEN at Elvira Rota Village, include:**

- The rehabilitation of the wetlands area at the Village. All water is recycled and the clean, safe water is re-used in and around the Home.
- Another positive by-product of the wetlands is the great variety of bird and insect species that are attracted to the area.
- The development of a sensory garden with the residents assisting Paulos, the gardener, with the planting.
- The building of a labyrinth, known to aid in relaxation and stress relief, as a meditation and spiritual tool.
- The construction of a compost toilet.
- A waterfall feature was added to the wetlands area and is of great benefit to the residents. Daniela, one of our residents at Elvira Rota Village, often talks about how much she loves sitting on the bench in front of it, which gives her an opportunity to think.
- Four owls' nests were constructed and placed in the area generating excitement for the children and staff.
- A lapa in the wetlands area was put up and is used by the residents for general relaxation and enjoyment of the environment, as well as the joy of sharing a meal there on special occasions.

The next project that LITTLE EDEN will be embarking on in the new financial year is the installation of a new septic tank. With the increase in the number of residents and staff over the past couple of years, this has become a necessity.

The residents at the farm feed and play with the animals. A group of the older men walk up to the farm every day to feed the sheep and pigs - they are so proud of their responsibilities! Ongoing therapy includes walking down to the wetlands where the residents can watch the birds and insects. A few residents took it upon themselves to feed the birds daily and it gives them great joy. The children also walk, or are pushed in their wheelchairs, through the sensory garden and the labyrinth. The latter has proved its effectiveness in aiding relaxation. It also has a calming effect and is especially beneficial to the children with dual diagnosis.

# Projects



*The Holy Family Chapel*

## **Official Dedication of the Holy Family Chapel - Elvira Rota Village**

The long awaited dedication and opening of the *Holy Family Chapel* at Elvira Rota Village, dedicated to the Holy Family, took place on 31 January 2010 in the presence of nearly 800 congregants including 160 residents from both Homes, staff and many friends and parishioners from Edenvale.

The main celebrant was Archbishop Emeritus George Daniel from the Archdiocese of Pretoria. His concelebrants were Bishop Rose of Dundee, Bishop Emeritus Roland and Bishop Abraham Julios of Muvattupuzha (of the Malabar Church in India) six priests and two deacons. Messages of congratulations and prayers for the future, were received from, amongst others, Archbishop Thlagale of Johannesburg and from the parish priest as well as the mayor of Domitilla Rota Hyams' home town in Italy.

In a brief speech during the ceremony, Chief Executive Officer, Lucy Slaviero, expressed her thanks, on behalf of LITTLE EDEN, to all who had contributed funds or their time, towards the realisation of this so longed-for Chapel. A large display board in the entrance of the Chapel, lists the many sponsors, both local and foreign who contributed to the Chapel. Compliments were paid to the professional team, contractors and all involved, on the success of the Chapel project.



*Sr Magie, Sr Tessa, Sr Therese and Bishop Julios*

The Chapel has been designed so as to serve a multi-purpose role. It allows for the placement of our many wheelchair bound residents, with an area having movable benches and pews in place.

## **Comments from donors:**

*"A wonderful church. I hope everyone who worships in it is blessed with the love that lives in LITTLE EDEN." - Gianfranco Talocchino*

*"Thank God for giving us the opportunity in being part of the Holy Family Chapel." - Alfredo Leonardo Crabbia*



*Unveiling of the cornerstone*

## **Chaplain's Residence: The Michael Welsh House**

It is expected that Archbishop Emeritus George Daniel will be moving into the *Michael Welsh House* in April 2010. He will be ministering to the spiritual needs of the children and staff.

# Projects (Cont.)

## Long-term Volunteer Accommodation

Initial plans and drawings were discussed for this capital project. The building will be of great value to LITTLE EDEN as we are receiving more and more international volunteers who stay for extended periods. Additionally, LITTLE EDEN has signed a contract with an order of Nuns from India, the Sisters of the Imitation of Christ, who will be working with the children for at least one year. It is hoped that their contract will be extended and that they will continue their missionary work on a long-term basis.

## Summary of Planned and Completed Projects

### Elvira Rota Village:

- Upgrade of Pino's Place residence, verandas and gardens as well as the new water feature outside the therapy room
- Completion of the *Respect and Sanctity of Life* aloe garden
- Completion of the lapa at the wetlands
- Repair and painting of the roof of Louis' Lodge accommodation
- Building of a toilet for use by residents next to the Jacuzzi room
- Replacement of locks in Pino's Place
- Upgrading of storm water channels to facilitate faster flow of water away from buildings
- Trees were planted in the parking area of the Chapel
- Preliminary plans for long-term volunteer accommodation
- Leveling of property around the staff room and kitchen area

### Edenvale:

- Replacement of all old heaters
- Therapy Centre refurbished and painted out
- Paving topped with building sand to seal cracks and prevent movement due to traffic and water
- Top soil placed on grass in the park to reduce potholes

## Fundraising, Marketing and Communication

### Fundraising

Generating a sustainable monthly income remains a challenge. LITTLE EDEN receives approximately 50% funding from Government. The shortfall of approximately R 8 000 000 must be raised every year to keep the doors of the Society open. This is met through specific appeals to corporates, the annual Fête, tin collections, the two second-hand shops, and the generosity of the public.

We anticipate having a full-time fundraiser from May 2010. This person will be responsible for securing the funds necessary to continue our operations - now and in the future.

The Society is grateful for each and every contribution received over the past year, whether it was a donation of time, money, skills or second-hand goods. This includes the local community, our schools, churches and service clubs, corporates, small businesses, individuals, volunteers and others. Without that support, it would be impossible for us to carry on.

Special mention must be made of the National Lottery Distribution Trust Fund, which continues to support LITTLE EDEN.

LITTLE EDEN is also very grateful to the Anglo American Chairman's Fund for the sponsorship of a Toyota Dyna truck, which is used specifically for farming activities.

Our direct mail campaign continues to be mailed to existing and potential donors. The Society's newsletter *In Touch* is distributed to donors three times a year and keeps them informed about happenings in and around the Homes and how their donations have contributed to the ongoing care of the children.

Besides growth in awareness of LITTLE EDEN the website has been used increasingly for fundraising and it is anticipated that this element will grow in the coming years.

# Fundraising, Marketing and Communication

We have continued to make use of viral mail to reach yet another audience with our newsletters and appeals via e-mail. An sms subscription line was set up to create yet another avenue for fundraising.

A new corporate dvd was created and distributed amongst corporate donors. The dvd specifically addresses issues of accountability, transparency and the sustainability of LITTLE EDEN.

The two second-hand shops, in Edenvale and Primrose, continue to be an essential source of income for LITTLE EDEN. We rely heavily on the public to support the shops by donating their unwanted second-hand goods, in a reasonable condition.

The impact of the recession could definitely be felt this year as the shops did not do as well as expected, despite several public appeals.

## Marketing and Communication

The media remains a powerful tool in promoting our worthy cause and we use every available opportunity to inform more people about the work that we undertake through the various mediums.

The ongoing pro-bono services rendered to LITTLE EDEN by *Newsclip Media Monitoring* have enabled the Society to monitor the effectiveness of its marketing and public relations campaigns throughout the year.

*Radio Heads, The Radio Specialist*, a part of the African Media Entertainment (AME) company, has continued their support of LITTLE EDEN as corporate social investment client. A successful awareness campaign was launched again this year. The budget for this type of marketing exercise is not available to LITTLE EDEN and therefore the sponsorship is greatly appreciated.

We managed to secure sponsorship, as a pro-bono project, from Targeted Lifestyle Communications (TLC) who have distributed posters on LITTLE EDEN across South Africa. The distribution channels included shopping centres, gyms and airports.

Positive feedback was received and funds raised as a result thereof.

The special relationship with the *Bedfordview and Edenvale News* continues. They have committed themselves to support the Society where they are able to.

Regular communiqué is distributed to our various constituencies in order to keep them informed of the latest news, as well as of specific needs and requirements the children may have.

Our organisational profile, brochures, newsletters, etc are available at all times to the public.

## Events and Functions

### Launch of the LITTLE EDEN Values

Treating our residents with love and care, dignity and respect and believing in them, has always been a prerequisite and a given in the work that we do. With this in mind, the Society decided to formalise the values that define the purpose and mission of the organisation, with input from staff.

These values: *Respect, Sanctity of Life, Love and Care*, are now encapsulated in a series of symbols that guide the way the staff and volunteers at LITTLE EDEN respond to children and adults with intellectual disability, to each other as staff, to the environment and to the larger community.

The official launch of the values took place on Wednesday 6 May 2009 at both Homes. Appropriately branded banners, stationery and key rings were distributed amongst staff and volunteers to encourage everyone to truly *live* these values in their daily lives - at LITTLE EDEN and in their homes and in the broader community.



# Fundraising, Marketing and Communication

(Cont.)



*Residents enjoying the interaction with the community*

## 19 Fête

The annual LITTLE EDEN fête held on 6 March 2010 was a wonderful success with many visitors joining us on the day. Despite the rain from previous days and the muddy grounds as a result thereof, it didn't prevent the local community from joining in the fun. The fête is a major annual fundraising event for LITTLE EDEN and has been taking place for over 40 years.



*Christmas concerts are a highlight each year*

## Concerts

As always, the children's Christmas concerts were a definite highlight of the year and were thoroughly enjoyed by our children, staff and visitors. The children practise for months prior to the concerts and their biggest reward is having an audience to

applaud their efforts and enjoy the day with them. At the Edenvale Home, our residents and staff took the guests on a journey to various countries in order to celebrate Christmas. At Elvira Rota Village, the story of Christmas had an environmental angle - as always a refreshing view on the nativity story!

## Founder Awarded in Italy

We were very proud when our founder, Domitilla Rota Hyams, was invited to attend a book launch in Italy last year where she was honoured for the work she has carried out in South Africa. The book "Storie in Valigia" (Stories in a Suitcase) by Giuseppe Zois and Laura Di Teodora contains 20 significant testimonies of emigrants from Bergamo, Italy, who chose to move to foreign countries over the centuries and achieved something great. The book is a tribute to the city of Bergamo and its people for their contributions to the betterment of the world.

Domitilla received a further significant award, presented at the Feast of the Constitution - Lombardy Region. On this occasion, Domitilla was awarded *The Gold Medals for Civil Valour* as well as the *Longobardo Seal Ring* - two honours created by the Regional Parliament to thank those citizens of Lombardy who have distinguished themselves in social, civil and cultural fields.



*Domitilla receiving award*

# Fundraising, Marketing and Communication

(Cont.)



*Residents and staff celebrate with the founders*

## Founders Celebrate their Birthdays at LITTLE EDEN

The children and staff were delighted to celebrate Domitilla's 92nd birthday and Danny's 89th with them at LITTLE EDEN. A big cake was shared between all and congratulatory wishes and messages streamed in from all over!

What a great privilege to have the founders of the Society still with us after 43 years! Although Domitilla is no longer involved in the work of LITTLE EDEN, she is still very much part of the heart of LITTLE EDEN - and loved by all.

## Volunteers

Besides our local volunteers we have had 12 international volunteers offering their services to LITTLE EDEN over the past year. The children enjoyed having them here and they have returned to their countries, enriched and happy to have had the opportunity to meet and get to know our children. These visitors have had a positive impact on the lives of our children. Volunteers, both local and from overseas, have made a difference to the therapy programme and to the activities of daily living. Not only do the children enjoy the interaction, but it is also a wonderful opportunity to share the good news of LITTLE EDEN.

Our volunteers give of their time and themselves to help our teachers and therapists in bringing something extra to the children. By doing so, they add value to the programme, as our children benefit from one-on-one contact and attention from friendly visitors.

The role that volunteers play at LITTLE EDEN is important and is testimony to the ongoing outstanding work that they have been part of over the past years.



*Volunteers and residents helping to plant aloes*

# Governance and Staffing

"In our opinion your work with the children and all the residents is wonderful and they are really happy here. We don't know if we have helped LITTLE EDEN'S children, but we know that LITTLE EDEN'S children have helped us." - Silvia and Maddalena, Italy

"I think I've grown up staying with my new friends. The best thing I've found doing my work at the farm is the friendship between the children. They are always happy to see you and they smile to us; things that we don't often do...I've enjoyed this experience at LITTLE EDEN. Regretfully time passes really fast and I have to say "bye-bye" to the children. I hope to come to South Africa another time as I have a lot of friends to visit. I've seen that I have left a sign in their hearts as they have a big sign in my heart." - Elena Fiorino, Italy

21



The Clowns from Holland paid a visit to our children

## Governance

The Board of Governors of LITTLE EDEN meets every two months to evaluate the preceding period of operation and to recommend and advise on enhancements and economies.

The Management team meets weekly to ensure that operational communication is frequent and pertinent to any current issues.

The Mental Health Directorate of the Department of Health audits the Society. The Board of Governors, Management and staff were congratulated for the exemplary manner in which the facilities are run and the manner in which the residents are cared for. Several unscheduled audits have been conducted throughout the year.

A recent development regarding the Department of Health is the transfer of Elvira Rota Village from the Tswane Region to the Ekurhuleni Department of Health. Both Homes are now in partnership with the Germiston Ekurhuleni Department of Health East Rand Region.

## Salary Survey

LITTLE EDEN participated, for the second year running, in the NPO salary survey undertaken by Averile Ryder Reward Specialists. This survey covers International and Southern African Region Organisations with offices or operations in South Africa, South African Independent NGO's and State Funded Organisations. The report was made available in September 2009 reflecting results as at 31 July 2009.

## Employment Equity Committee

The Constitution of this Committee has been formalised as has the LITTLE EDEN Employment Equity Plan. LITTLE EDEN will submit a Skills development plan by 30 June 2010 in order to access funding from the Health and Welfare SETA for Staff Training. LITTLE EDEN, ably assisted by Connold and Associates Human Resource Practitioners, will again submit the bi-annual report covering the period 1 August 2008 to 31 July 2010 to the Department of Labour. The Employment Equity Committee and representative from Connold and Associates continue to meet 3 times a year.

# Governance and Staffing (Cont.)

## BEE Score Card

Empowerdex have updated our scorecard following their preliminary report. As at 7 October 2009, LITTLE EDEN is a Level 5 contributor BBB on the scorecard. The CSO beneficiary analysis certificate, which is issued annually, went from 56% in December 2008 to 59% in December 2009.

## SHE (safety, health and environmental programme)

The audit received from SCOTT-SAFE, our pro-bono Occupational Health & Safety Specialists, gives LITTLE EDEN compliancy with health and safety regulations for both Homes and shops. This regular audit has enabled us to identify any potential issues which are then timeously dealt with. It has ensured an increased safe environment for both staff and residents. In this regard, LITTLE EDEN acknowledges the contributions made by SCOTT-SAFE in ensuring that safety standards are maintained at a high level and that regular external audits are carried out.

Fire fighting training by the fire department was carried out at both Homes. Relevant staff attended Health & Safety courses as well as First Aid courses.

## PAIA (promotion of access to information act)

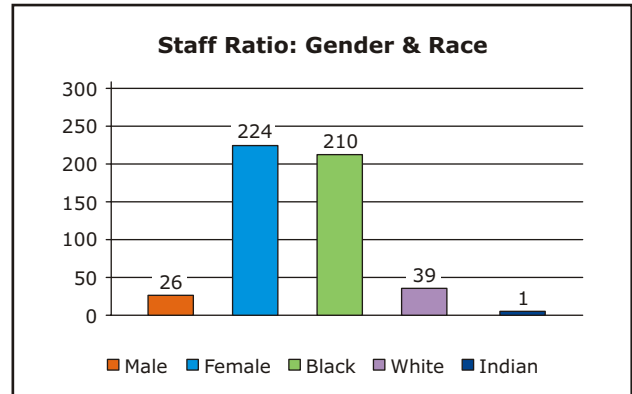
This manual is available on the website to potential requesters of information giving the procedure to be followed when requesting information and/or documents from LITTLE EDEN.

## Staffing

Supercare Services Group (Pty) Ltd provides the Society with outsourced labour services for the majority of the day-to-day operational functions at both Homes and the two second hand shops.

There is a total of 250 members of staff (LITTLE EDEN and Supercare). The work is not only physically demanding, but also has an emotional element. Yet, our staff turnover is low, which is beneficial to the children as they become attached to their care givers.

Ongoing staff training forms an essential part of the work at LITTLE EDEN. An additional three Professional Nurses have been employed to work full time at Elvira Rota Village.



## Long Service Awards

All enjoy the benefit of long service awards. These annual awards, presented to Staff who qualified this year, included our Chief Executive Officer, Lucy Slaviero for 30 years, Patricia Shasha for 25 years and Sr Gill Wratten for 10 years of dedicated commitment and service.



*Our dedicated staff caring for our children*

# Governance and Staffing (Cont.)

## Ethos Committees

The Bambanani and Tirisano Ethos Committees continue to run at both Homes with meetings being held monthly. LITTLE EDEN and Supercare staff are represented. Training workshops have been held twice in the year; the second of which included an invitation to all staff, not only those already serving on the committee. Management meets regularly with the consultants, Sr Ann Wigley and Sandra Starkey to discuss the way forward.

In April 2009 an evaluation of the two years' Ethos programme was undertaken using feedback from all Staff. The overwhelming response was to continue with this process. The purpose of the workshop following on from this was to begin discerning the future work of the consolidation of values and to develop evaluation skills as well as evaluating the programme of promoting the values of LITTLE EDEN.

23



Living the values

## Caring for the Carers

This programme was implemented to allow staff time off from their duties to recharge and concentrate on themselves for 30 minutes, once a week. It has continued at both Homes with positive results.

*"After each session, you feel relaxed and energized. It's like the beginning of a new day!" - Wendy, Care worker*

*"If something made me upset before the session, I forget about it during the session!" - Patricia, Group Leader*

*"Before the session, I am usually tired and stressed, but after the session I feel revived and energized." - Ellen, Housemother*

*"During the session I forget about everything that is worrying me, which makes me feel better after the Caring for the Carer session." - Irene, Cleaner*

At Elvira Rota Village, the music therapist involves staff with vocal toning in a programme of Visual Imagery through Music. At the Edenvale Home physiotherapists lead staff in various light exercises and dance moves.

The Peech Hotel in Rosebank offers a monthly overnight stay at their hotel for a Staff member and partner. This is well received by Staff who can obtain a chance to stay over by putting their name into a draw.



Caring for the Carers session in full swing

# The Future of LITTLE EDEN



24

As we enter a new financial year, we are all too aware of the fact that each such period produces its own challenges and perhaps even some setbacks. However, we are determined to continue the work of LITTLE EDEN - one day at a time - knowing that it is a job worth doing and a cause worth fighting for.

Our main task and number one priority remains the excellent care, good health and well-being of our precious residents who have been entrusted to us. We will ensure that the services we provide to our special people, are constantly being improved and reviewed so that we do not fail these children who rely on us so completely.

In the new financial year, we will focus on working towards a stronger relationship with the Department of Health in meeting the needs of persons with intellectual disabilities.

We do not take the responsibility of caring for our precious people lightly. The benefits to the residents of each and every project or venture we embark on are thoroughly considered before any action is taken.

The realisation of the long-term volunteer accommodation at Elvira Rota Village is something that we look forward to. In the long run, it will have a lasting, positive impact on the work of LITTLE EDEN.

Our key concern remains the issue of sustainability. The after-effects of the recession have created economic challenges for many individuals and companies which have not yet been overcome. However, as long as we have trust in Divine Providence, the co-operation and positive attitudes of our wonderful staff, as well as the continued generous contributions - no matter how small - from our friends and benefactors, we are confident that we shall succeed.



Society for the Care of Persons with Intellectual Disability

Cnr Harris Ave & Wagenaar Rd, Edenglen, Edenvale, Gauteng  
P O Box 121, Edenvale 1610, RSA  
Tel: +27 11 609 7246 Fax: +27 11 452 4560  
E-mail: [info@littleeden.org.za](mailto:info@littleeden.org.za) [www.littleeden.org.za](http://www.littleeden.org.za)

001-827 NPO